



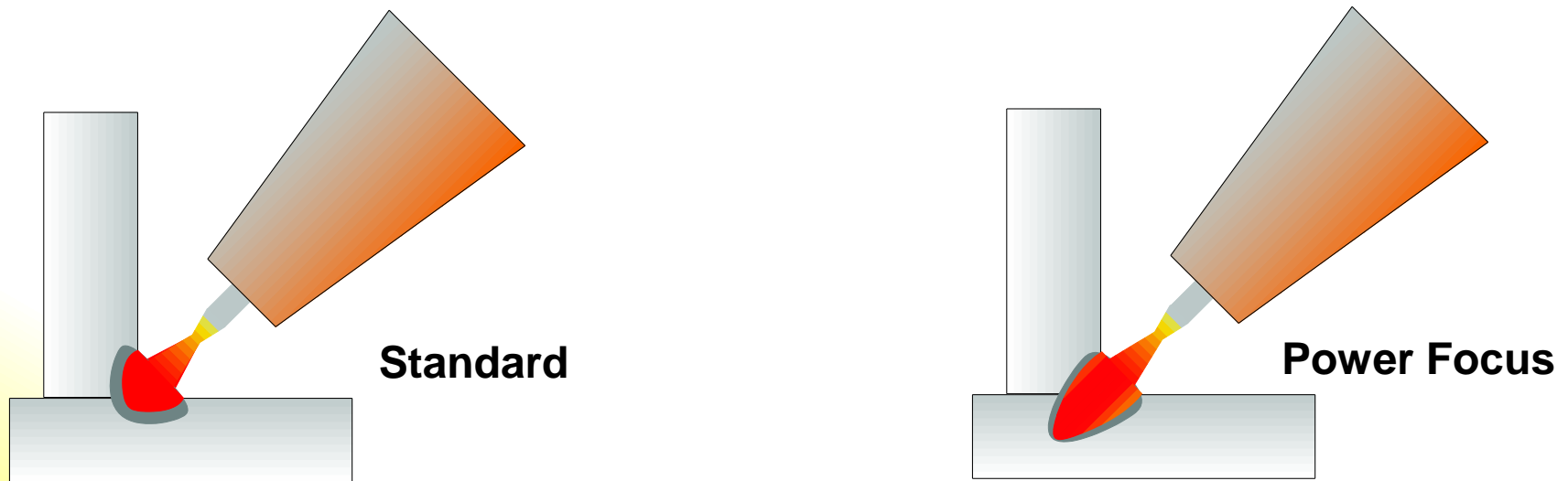




**The solution that allows a higher
productivity**

The difference between **Standard Mig Mag** welding and **Power Focus** is to be found on the concentration and precision of the arc.

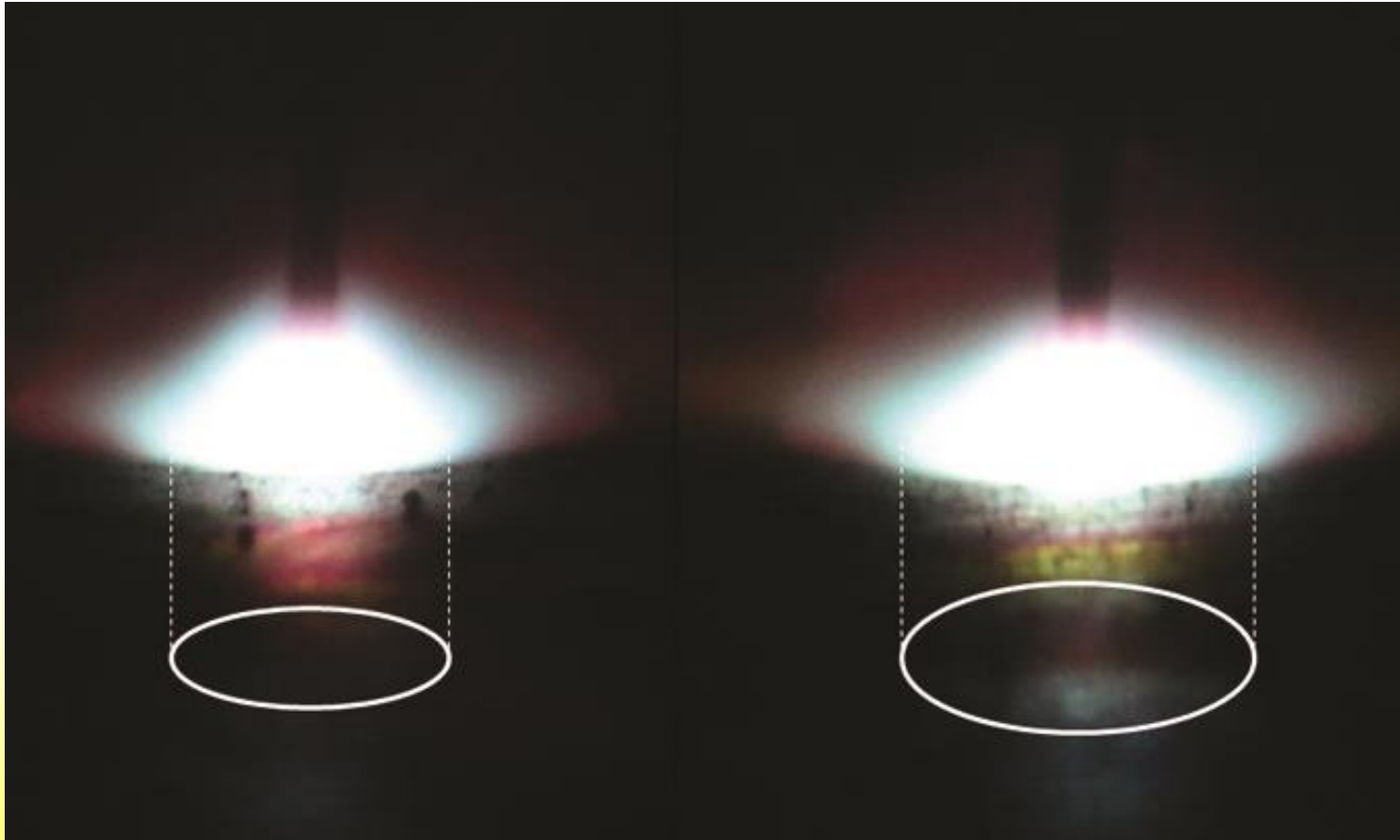
The concentration on the **Power Focus** mode allows to focalize the high arc temperature precisely on the middle of the deposition, avoiding overheating on the weld edges.



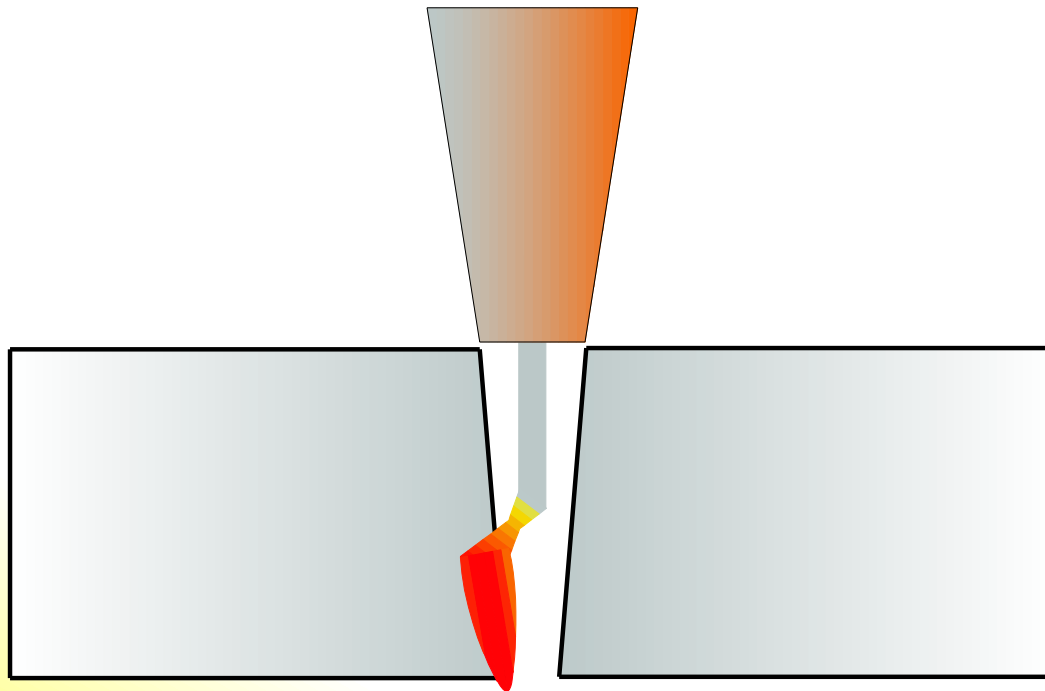
The heat affected zone (HAZ) is by **Power Focus** mode less expanded

POWER FOCUS ARC

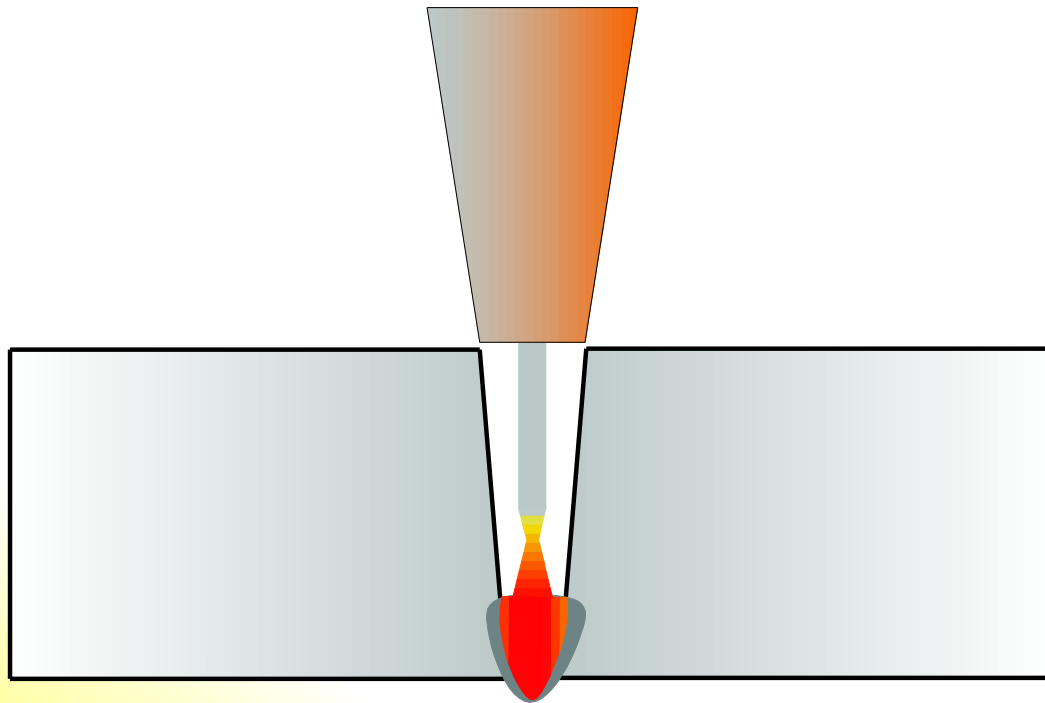
STANDARD ARC



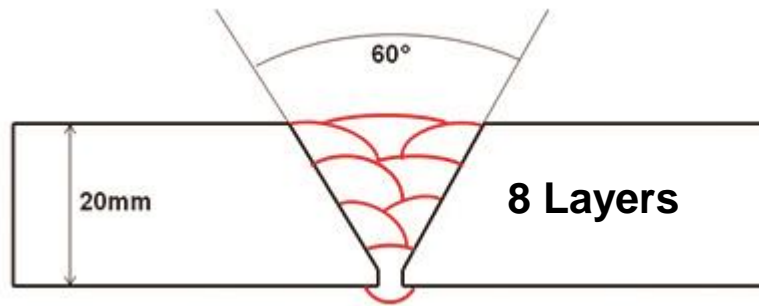
In case of butt weld, if the plates caulker presents narrow angles, the standard arc has the tendency to get out from the caulker and to focus only on one of the two plate corners. In this situation, it is normally necessary to increase the caulker's angle degree (during the preparation) with consequent need of more filling passes.



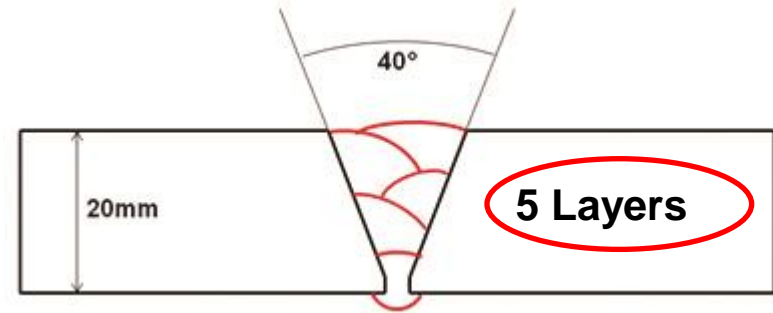
On the butt welding applications the **Power Focus Arc** keeps on staying concentrated in the exact middle of the caulkers, so that full penetration is granted. In this way, it is possible to work on very narrow caulkers, which demands less mechanical preparation and of course, also less filling passes.



**Joint Geometry
with Standard Arc**



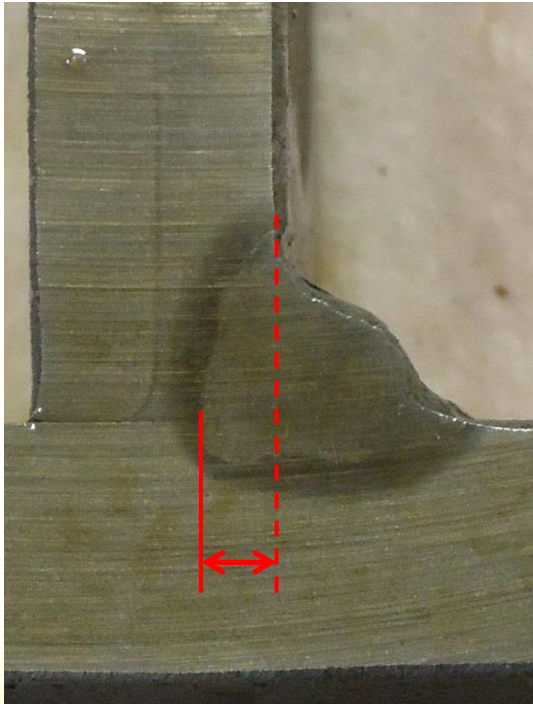
**Joint Geometry
with Power Focus**



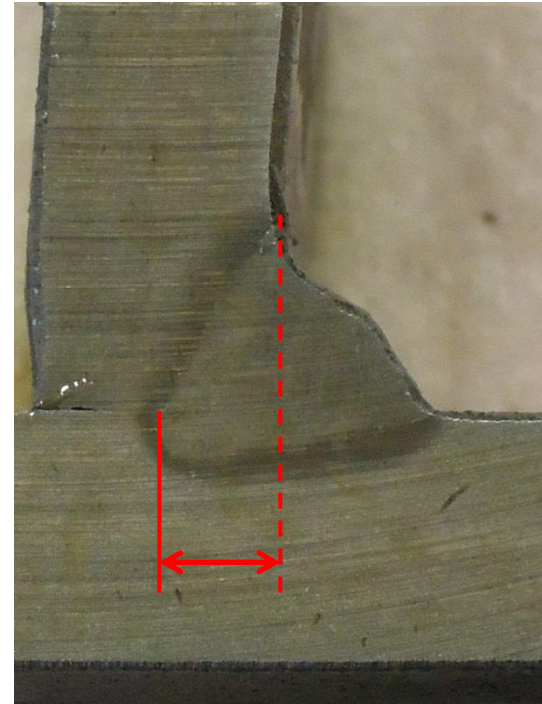
Until 40% less volume to fill!

Power Focus provides a stable arc even with stick-out very long (50mm)

STANDARD ARC

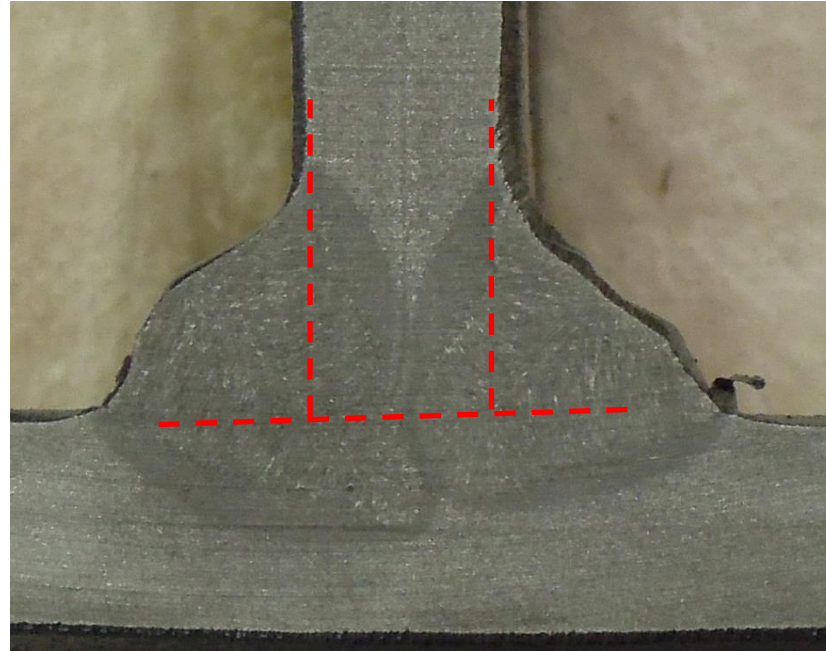


POWER FOCUS



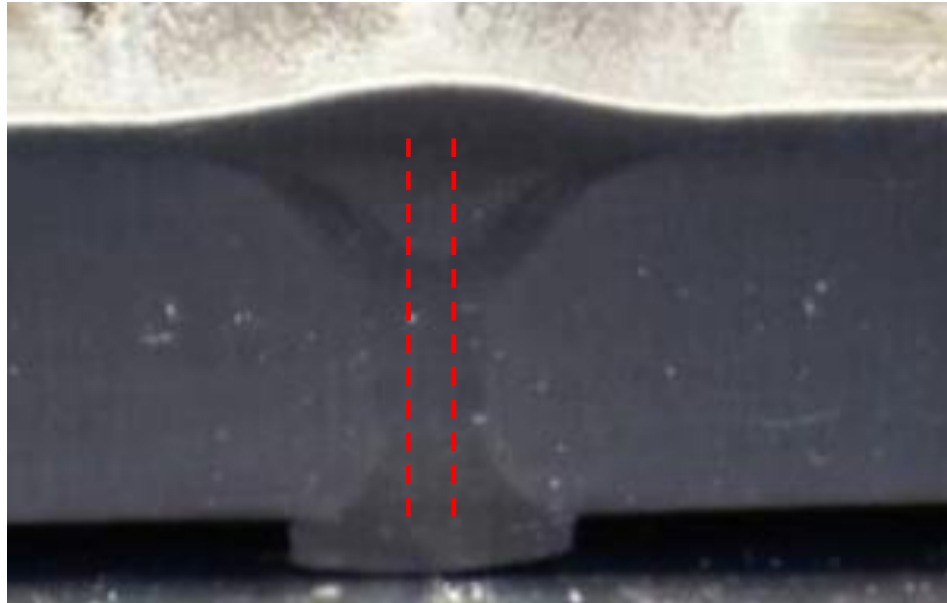
Penetration by **Power Focus** on a T joint (10 mm thickness), when welded on the two sides, it comes up to interest crossing.

WELD ON BOTH SIDES



Penetration by **Power Focus** on a T joint (10 mm thickness), when welded on the two sides, it comes up to intersect crossing.

GIUNTO TESTA-TESTA



- **Spessore 10mm / 1 Passata**
- **Luce 2mm**
- **Supporto Ceramico**



POWER FOCUS



WECO SRL

WELDING EQUIPMENTS

Via S. Antonio, 22 -Loc. Belvedere

36050 TEZZE SUL BRENTA (Vicenza) Italy

Tel +39 0424 561 943 - Fax +39 0424 561 944

<http://www.weco.it> - e-mail: info@weco.it